

### DESCRIPTION

Trabon MJ Series-Flo Divider Valves are designed for lubricating systems serving machine tools and other comparable equipment.

In many installations the MSP divider valve serves as the master divider assembly for an MJ system.

A typical MJ Series-Flo divider assembly (to the right) consists of an inlet section, end section and three to eight valve sections. One manifold will serve up to a maximum of 16 lube points.

The MJ valve sections, which have built-in outlet check valves, are available in various output sizes. Each twin (T) section has 2 outlets, one from each side of the section. Each single (S) section can have an outlet on either side but the outlet on one side must be plugged for the section to operate properly.



### FEATURES/ADVANTAGES

- Delivers metered amount of lubricant
- Compact design
- Simple to install
- Built-in outlet check valves

### OPERATION

Operational sequence of an MJ Series-Flo divider valve assembly is defined as “progressive”. The term progressive means that each valve section completes its piston stroke, discharging a measured amount of lubricant to the bearing it serves before the following valve section operates. As long as lubricant is supplied under pressure to the inlet section of the divider assembly, valve sections will continue to operate in a progressive manner. Divider assemblies always follow a constant discharge pattern. Whenever lubricant flow ceases, the valving pistons will stop. When flow resumes it will start again at the same point in the discharge cycle.

### SPECIFICATIONS

Material..... Steel (Zink Plated)  
 Pressure (max.)..... 2000 PSI (13789 Kpa)  
 Lubricant.....Oil up to NLGI Grade 1 or Grease  
 Maximum Operating Temperature..... 200°F  
 Maximum Cycle rate with Cycle Pin.. .... 60 cycles/min.

Net Weight (Divider Valve Assembly approx.)

3 section divider..... 1 lb.,15 oz.(0.88 kg.)  
 4 section divider..... 2 lbs.,5 oz.(1.04 kg.)  
 5 section divider..... 2 lbs.,11 oz.(1.21 kg.)  
 6 section divider..... 3 lbs.,1 oz.(1.38 kg.)  
 7 section divider..... 3 lbs.,7 oz.(1.55 kg.)  
 8 section divider..... 3 lbs.,13 oz.(1.72 kg.)

Sizes+	Displacement *(cu. in) (cm³)	
5T.....	0.005	0.081
5S.....	0.010	0.163
10T.....	0.010	0.163
15T.....	0.015	0.245
10S.....	0.020	0.327
15S.....	0.030	0.491

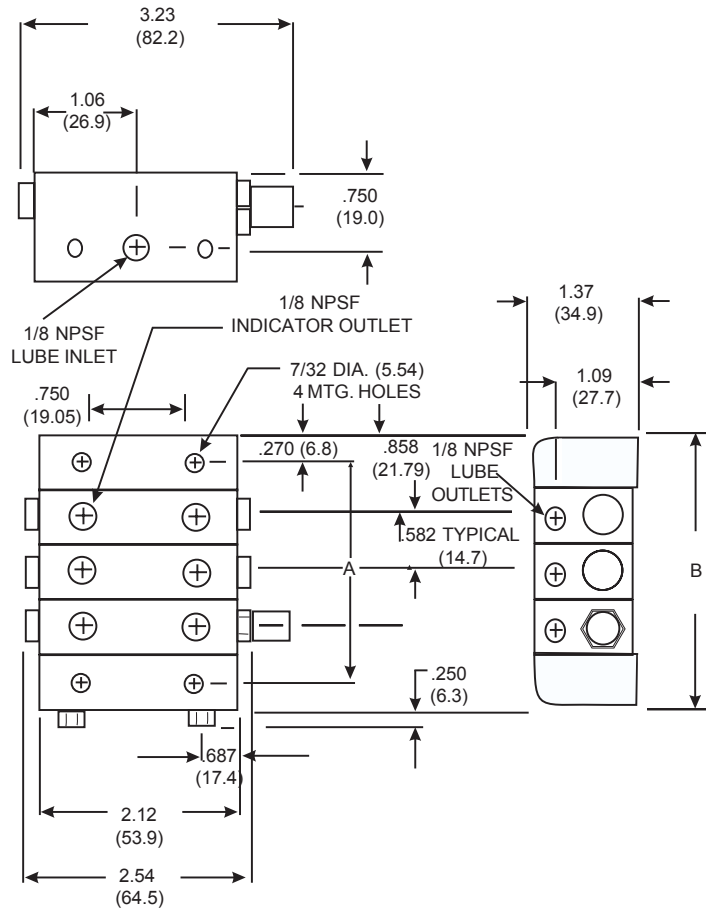
+This number is stamped on each valve section.

\*This is the volume discharge per outlet after one complete cycle.

Torque Specifications

Tie Road Nut..... 12 ft. lbs.  
 Enclosure Plug..... 11 -13 ft. lbs.  
 Outlet Port Plug..... 6-7 ft.lbs.

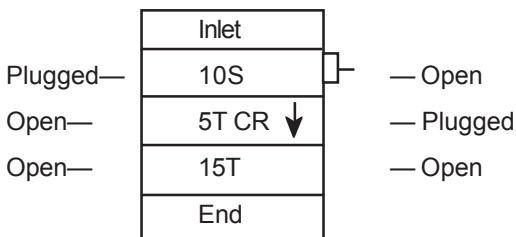
**DIMENSIONS** Inches/(mm)



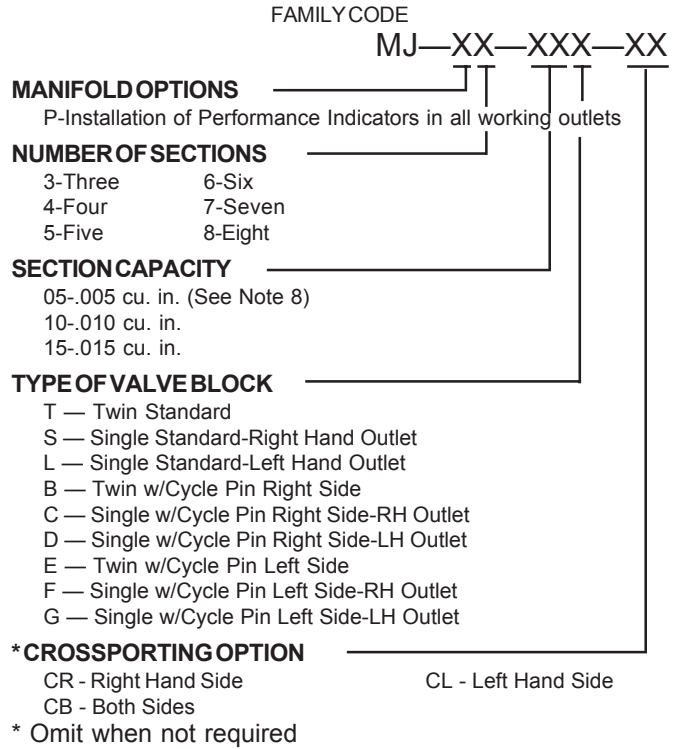
DIVIDER VALVE	A—DIM. (APPROX.)	B—DIM.
MJ-3	2.34 ( 59.4)	2.87 ( 73.1)
MJ-4	2.92 ( 74.2)	3.46 ( 87.9)
MJ-5	3.50 (89.0)	4.04 (102.6)
MJ-6	4.08 (103.7)	4.62 (117.4)
MJ-7	4.66 (118.5)	5.20 (132.2)
MJ-8	5.25 (133.3)	5.78 (147.0)

**Note:** Millimeter dimensions appear in parentheses below decimal figure in inches.

**Divider Valves Sketch Example**  
**MJ-3-10S-05TCR-15T**  
**MJ-3 Divider Valve with Indicator and Internal Crossport**



**ORDERING INFORMATION**



**NOTES:**

- Capacity sections are specified starting from inlet section, and must equal number of sections specified.
- When a capacity section is crossported, its outlet is plugged and output is diverted to the next valve farthest from inlet.
- Last capacity section, farthest from the inlet, cannot be crossported.
- Singled capacity sections can be crossported on one side only.
- When capacity section is singled, the outlet not being used is plugged.
- Internal crossporting can be supplied on a capacity section only when supplied on a manifold assembly (if supplied as a loose unit, it can be field drilled only).
- External singling and crossporting bars are available for field installation.
- Cycle Indicator Pin is not available on .005 capacity section.
- Indicate crossport option after capacity section if required, omit if not required.
- Divider systems should not be limited to first and second stages only. Third staging is not recommended. Refer to Trabon bulletins 20101, 20105, 20115 for further information on system design.

**ACCESSORIES**

**Order Part No.**

Cycle Switch (SPDT) & Bracket.....	510-599-000
Cycle Switch (DPDT) & Bracket.....	510-577-000
Singling Bars.....	189-000-050
Crossporting Bars.....	189-000-040
Divider Valve Installation Accessories.....	See Lit. No. 15126
Performance Indicators.....	See Lit. No. 15401
Accessories and Parts.....	See Lit. No. 10161

©Registered trademark of LUBRIQUIP, INC.,  
 A Unit of IDEX Corporation, Printed in U.S.A.

